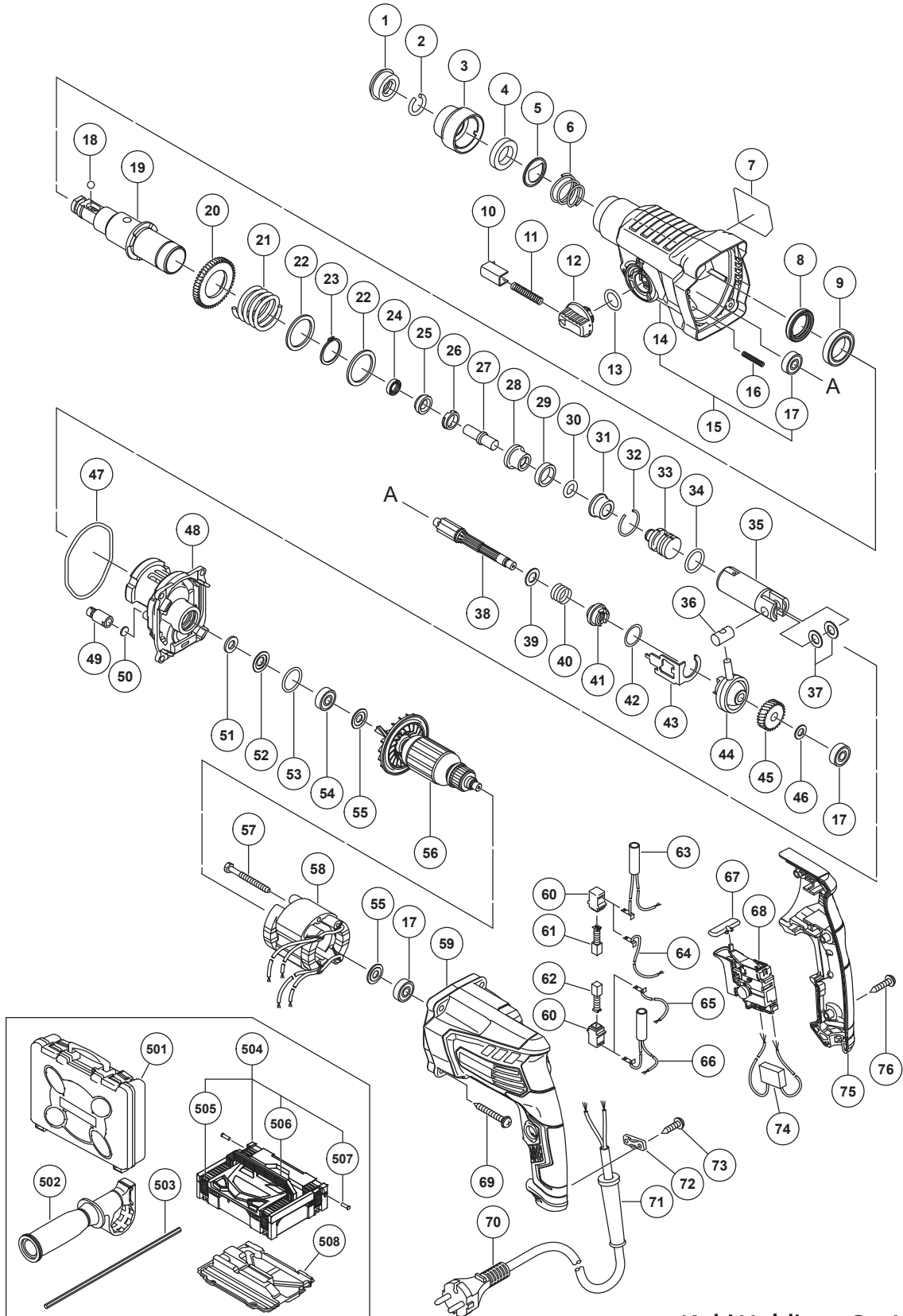


ELECTRIC TOOL PARTS LIST

■ ROTARY HAMMER Model DH 26PB2

2019 · 3 · 29
(E1)



PARTS

DH 26PB2

ITEM NO.	CODE NO.	DESCRIPTION	NO. USED	REMARKS
1	306345	FRONT CAP	1	
2	306340	STOPPER RING	1	
3	374436	GRIP	1	
4	374437	BALL HOLDER	1	
5	374435	HOLDER PLATE	1	
6	322812	HOLDER SPRING	1	
7		NAME PLATE	1	
8	335259	OIL SEAL	1	
9	6805BB	BALL BEARING 6805	1	
10	322789	PUSHING BUTTON	1	
11	317223	PUSHING SPRING	1	
12	334011	CHANGE LEVER	1	
13	878885	O-RING (S-18)	1	
14	374620	GEAR COVER	1	
15	375017	GEAR COVER ASS'Y	1	INCLUD.14,17
16	335800	SPRING (E)	1	
17	608VVM	BALL BEARING 608VVC2PS2L	3	
18	335300	STEEL BALL D7.0 (10 PCS.)	1	
19	374426	CYLINDER	1	
20	335265	SECOND GEAR	1	
21	374430	SPRING (B)	1	
22	301679	WASHER (A)	2	
23	948310	RETAINING RING FOR D30 SHAFT	1	
24	335262	OIL SEAL (A)	1	
25	374431	HAMMER HOLDER (B)	1	
26	374427	HOLDER SLEEVE	1	
27	374432	SECOND HAMMER	1	
28	374429	HAMMER HOLDER (A)	1	
29	322805	DAMPER (A)	1	
30	322808	O-RING (C)	1	
31	324524	DAMPER HOLDER	1	
32	322807	STOPPER RING	1	
33	374443	STRIKER	1	
34	372816	O-RING	1	
35	372817	PISTON	1	
36	335793	PISTON PIN	1	
37	335794	PISTON WASHER	2	
38	374621	SECOND SHAFT	1	
39	335251	WASHER (C)	1	
40	323182	CLUTCH SPRING	1	
41	375022	CLUTCH	1	
42	331315	WASHER	1	
43	335252	CHANGE PLATE	1	
44	335249	RECIPROCATING BEARING	1	
45	374441	FIRST GEAR	1	
46	374442	BEARING WASHER	1	
47	335245	O-RING D72.2	1	
48	374433	INNER COVER	1	
49	334008	AIR CAP	1	
50	324543	FELT PACKING (A)	1	

STANDARD ACCESSORIES

DH 26PB2

ITEM NO.	CODE NO.	DESCRIPTION	NO. USED	REMARKS
501	374619	CASE	1	
502	374447	SIDE HANDLE	1	
* 503	303709	DEPTH GAUGE	1	
* 503	310331	DEPTH GAUGE	1	FOR MEX
504	337739	CASE ASS'Y (STACKABLE 1)	1	INCLUD.505-507
505	336472	LATCH	4	
506	336473	HANDLE	1	
507	336474	HINGE	2	
508	337741	INNER TRAY	1	

OPTIONAL ACCESSORIES

ITEM NO.	CODE NO.	DESCRIPTION	NO. USED	REMARKS
601	306885	DUST COLLECTOR (B) ASS'Y	1	INCLUD.602,610
602	986802	DUST COLLECTOR ASS'Y	1	INCLUD.603-609
603	986803	DUST COVER	1	
604	986804	SEAL COVER	1	
605	948310	RETAINING RING FOR D30 SHAFT	1	
606	958063	WASHER	1	
607	959150	STEEL BALL D6.35 (10 PCS.)	19	
608	986805	OUTER RACE	1	
609	986806	SOCKET	1	
610	306910	SOCKET ADAPTER (B)	1	
611	971787	DUST CUP	1	
612	931844	STOPPER	1	
613	321814	DRILL CHUCK 13VLRB-D	1	INCLUD.614
614	331966	FLAT HD. SCREW (LEFT HAND) M6 X 20	1	
615	321813	DRILL CHUCK 13VLD-D	1	
616	971511Z	+ DRIVER BIT (A) NO.2 25L	1	
617	971512Z	+ DRIVER BIT (A) NO.3 25L	1	
618	971794	ANCHOR SETTING ADAPTER A W1/4" (MANUAL)	1	
619	971795	ANCHOR SETTING ADAPTER A W5/16" (MANUAL)	1	
620	971796	ANCHOR SETTING ADAPTER A W3/8" (MANUAL)	1	
621	971797	ANCHOR SETTING ADAPTER A W1/2" (MANUAL)	1	
622	971798	ANCHOR SETTING ADAPTER A W5/8" (MANUAL)	1	
623	971799	ANCHOR SETTING ADAPTER B W1/4" (MANUAL)	1	
624	971800	ANCHOR SETTING ADAPTER B W5/16" (MANUAL)	1	
625	971801	ANCHOR SETTING ADAPTER B W3/8" (MANUAL)	1	
626	971802	ANCHOR SETTING ADAPTER B W1/2" (MANUAL)	1	
627	971803	ANCHOR SETTING ADAPTER B W5/8" (MANUAL)	1	
628	320859	SYRINGE (BLOW-OUT BULB TYPE)	1	
629	944477	COTTER	1	
630	982684	CENTER PIN (A) 109L FOR CORE BIT D32-38	1	
631	982685	CENTER PIN (B) 104L FOR CORE BIT D45-90	1	
632	335781	GREASE FOR ROTARY HAMMER (500G)	1	
633	335782	GREASE FOR ROTARY HAMMER (60G)	1	